

phil&teds™

your e3 twin
survival guide



3 & easy



welcome to the
adaptable & delightful
world of phil & teds

our boxes make a great
distraction for your children while
you get into the nitty & gritty. the
plastic bag, however, does not!

Please read the **WARNINGS** on inside
back cover carefully and help us continue
improving our adaptability range by
returning your warranty from.

nitty & gritty

bits & bobs 2

one: wheeling & dealing 3

two: swivel & swerve 4

three: up & running 5

four: handling 6

five: hooding up 7

six: insert babies 7

ups & downs

newborns 8

toddlers 9

tricks & treats

buggy covers 10

buggy cocoon 10

buggy storage 11

buggy liners 11

cuts & bruises 13

rights & remedies 14

return & relax 15

check your bits & bobs



Open your e3 twin carton and check that the following bits and bobs are there

- a. 2 x rear wheels
- b. 1 x main buggy
- c. 2 x front wheel
- d. 4 x bungs (attached to front of buggy)
– use when bumper bar is not attached (push in silver buttons and remove).
- e. 2 x clear backflap (for use in newborn baby position)

You will need

1 x scissors

1 x adult (or someone who follows instructions!)

Now just follow steps **one** to **six**...



Please note that this buggy has not been designed for running or jogging purposes.



one: wheeling & dealing

1. Take main buggy and lay flat (sunhoods up) as shown.



2. Lift handle so rear axle is clear to attach rear wheels.



3. Remove rear wheels from plastic bag and use scissors to unwrap packaging (discard bag immediately – it is a suffocation hazard for children).
4. Take one rear wheel and push in silver button on silver wheel axle.

5. Hold silver button in while inserting wheel axle into buggy frame. Line up silver button so it pops out of hole on frame.



6. Repeat for second rear wheel on opposite side (wheels work on either side).





two: swivel & swerve

1. Turn twin buggy over and lift front as far as hinge will allow.



2. Remove first front wheel from bag (the rod is greased so watch out for greasy fingers!).

3. Extend black cap out fully on underside of footwell and insert rod on front wheel.



4. Release cap. Your wheel will be in place for use.
5. Repeat for other front wheel.



to lock the front wheels

1. Align silver button with small hole on inside of front wheel black cap.
2. Turn wheel towards rear wheels of buggy so front wheel is directly underneath footwell and parallel with rear wheels.
3. Cap will then fully close and fix front wheel. Reverse for swivel.





three: up & running

1. Turn buggy over onto 4 wheels.
2. Pull up rear frame.
3. Pull up until you hear a resounding 'click'. Ensure that locks are engaged. Seats should now be firmly in place.



4. Ensure levers 'a' and 'b' (autolocks) are properly engaged (as above).

to fold

1. Press lever 'b' and pull lever 'a' (autolocks) on either side at bottom of frame seat with fingers whilst holding frame with palms of hands.
2. Let handle drop down, lift buggy by cross bar (parallel to bumper bar) 'c'; front wheels (swivel) fold under frame.
3. Attach wrist strap around main buggy frame to help hold it folded.

Make sure children are clear of buggy before folding, unfolding or adjusting the buggy. Watch fingers - injury may result.



Ensure that you hold the main frame of the buggy when lifting in and out of car.

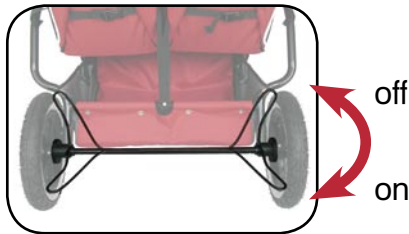


four: handling her

brakes

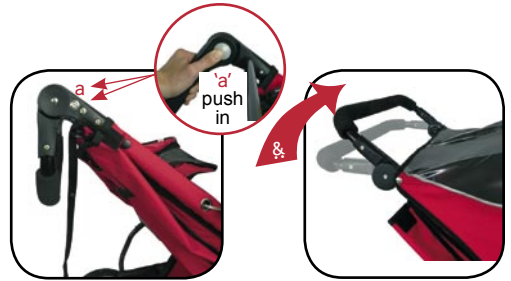
Now you're up and running don't let buggy get away on you - use brakes.

1. Stand behind buggy and push brake lever down with foot. This will put brakes on. Push up to take brakes off.



handle

1. Push hood forward to access top of frame.
2. Press in buttons 'a' on inside of handle (both L and R sides).
3. Hold both buttons in and pull handle up until you hear a clear 'click'. Ensure buttons 'a' pop out again.



If you're not happy with lower handle setting adjust to higher setting:

4. Push in buttons 'a' on either side on the inside of the handle again.
5. Pull handle up to higher position until you hear a clear 'click'. Ensure buttons 'a' pop out again.



When pulling buggy ALWAYS adjust handle to ensure it aligns with frame as per photo.

Safety Wrist Strap - Your buggy can be free wheeling without the brakes so the safety wrist strap should be worn at all times when pushing the buggy. Just loop it round your wrist.



five: hooding up

1. Attach snaps on back of sunhoods to higher snaps on handle, both left and right sides.



2. Move to front of buggy and secure snaps on front of sunhoods to seats.



Note that the windows in the hood are lined with a sun mesh of a lower shade factor than buggy fabric. Always use sun cream and clothing for protection of children in direct sunlight.



six: insert babies

Apply brakes and insert babies and fasten safety harnesses.

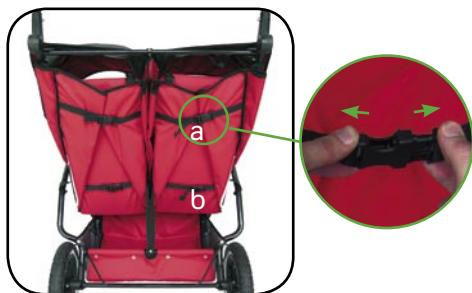
1. Unclip 4 buckles on breastplate (circled in green) and place baby in buggy.
2. Adjust upper straps to fit snugly on babies' shoulders.
3. The breastplate should sit snugly on each baby's chest. Adjust side straps until it sits in correct position. (You should be able to fit 2 average size fingers between straps and baby.)
4. Adjust crotch strap length (under or over webbing loop) for a comfortable fit.



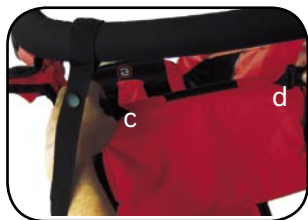
WARNING: Ensure harnesses are used and properly adjusted at all times.

newborn buggy (carry newborn babies)

1. With buggy set up ready to go, apply brakes.
2. Undo 2 clips at back of seat, 'a' and 'b'.



3. Undo clips 'c' and 'd' at top of seat base and push base corners down until it is almost flat.



4. Undo zips fully on either side of seat base for a completely flat newborn bed.
5. Lie baby flat in newborn position, facing forward, and secure baby firmly with adjusted safety harness.
6. Repeat for other seat.



using the clear plastic back flap

1. Attach clear plastic back flap using hook/loop tape at top, '1', and sides, '2' and '3'.



The back flap can be rolled up and held at top using strip of hook/loop tape at top.

WARNING: Never allow the plastic to fall over the child.

toddler buggy (carry 2 children)

This position is generally comfortable for a child from 3-6 months, once child is strong enough to support its head.

Setting up from newborn baby position:

1. Remove and store clear plastic back flaps.
2. Do up zips on either side of seat bases.

3. Move behind buggy and invert seat base so that clips at top of base show.
4. Push up and do up 2 clips at back of seat.



5. Attach clips at top of seat base to back of seat fabric.
6. Repeat for other seat.

recline seat

1. Unzip zips inside seats to recline.



This position is not recommended for newborns. Newborns need to lie flat – refer to newborn buggy instructions.

Note that it is easier to zip up seats without a children in the buggy!

buggy covers

stormy weather & uv sunny days

1. Unfold cover carefully.
2. Place over sunhoods. Attach around handle using snaps on each side of cover.
3. Attach cover to lower frame using snaps on each side of buggy.

Note that uv sunny days also has two mesh backflaps - apply in the same way as the clear plastic backflaps for newborn buggy.



buggy cocoon

e3 cocoon

The cocoon is a light, portable carry-cot which fits quickly and easily in buggy, so you can move a sleeping child to and from buggy with no bother or fuss.

1. With buggy set up ready to go, apply brakes.
2. Unzip cocoon top and make baby comfortable inside.
3. Set-up buggy in baby buggy position and lie cocoon inside.
4. Face baby either towards or away from you.
5. Clip cocoon to buggy using buckles on each side of buggy.



buggy storage

bacpac X

Put it on your back or attach it to your buggy.

1. Remove 2 straps looped through D rings, 'a' and 'b', at top of bacpac.
2. Attach clips on straps to bacpac D rings, 'a' and 'b', and attach straps around buggy handle using snaps.
3. Use hook/loop tape on bottom of 2 shoulder straps to attach bacpac to either side of buggy frame.
4. Bottle/snack holder clips into holder on buggy side (right hand side when standing at back of buggy).



buggy liners

buggy bunny

1. Place in buggy and feed harness straps through gaps.



woolly & warm

1. Feed harness straps through slots on rear of liner (cut new slots as required).



snuggle & snooze

1. Feed harness straps through slots on rear of sleeping bag.





smartbuggy™



metoo™



metro

adapt & survive!™



escape

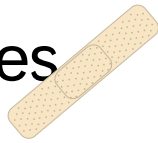


T2



tott

cuts & bruises



cleaning & caring for your e3 twin

unlike children, your e3 twin likes to stay clean.

e3 twin's coat

The fabric is backed with a water-resistant coating. Brush off dirt. More intense cleaning can be done by hand, in warm water, using a mild natural soap. Rinse out soap. Do not use detergents or bleach. Air dry. Don't leave the e3 twin out in the sun - the fabric is fade resistant but not fade proof (just like your kids!).

e3 twin's body

We recommend that dirt is brushed off the frame and wheels regularly. Clean with a non-abrasive household cleaner and soft cloth. Wash off sand and salt after beach activity. (How would you like it if someone left sand in your knickers!!) Always dry frame if wet (no one likes soggy knickers!).

tyres & inner tube

The valve is car-size. We recommend 20 - 22 psi. Releasing air gives a softer ride,

but lower pressure reduces tread life. New inner tubes and tyres are generally available (21/4" x 121/2" tyre) from your dealer, cycle or specialist wheel shops. Standard tyre kits can repair punctures. A flat tyre can result from grit holding the valve open; to check: inflate tyre, deflate rapidly, and re-inflate. Tyres and tubes are not under warranty. Do not over inflate.

rubber covers & grip

Take care to avoid damage to the foam rubber on both the handle and the bumper bar. The foam rubber is not under warranty.

inspect & maintain

Moving parts may need periodic lubrication. Inspect essential components for fraying (esp. webbing straps and safety harness), wear (esp. auto-locks, snap fasteners, button springs, tyres, plastic parts, zips and moving parts), security (esp. autolocks and caps which must not be loose) and freedom of movement (esp. wheels, nuts). Excessive wear can reduce effectiveness and safety.

rights & remedies

our warranty and service policy

We want to give owners confidence in the quality of our products. They are warranted against defects in materials and workmanship for one year from the date of purchase.

If the product has a manufacturing fault we will repair it free of charge. If not practical to repair it we will, at our discretion, replace the part in question*. If the product fails due to wear and tear, accident, neglect or negligence, or is outside the one year warranty, we will happily repair it for a reasonable charge.

details of warranty

Who is covered? Original purchaser buying new product from an authorised dealer. Proof of purchase is required.

What is covered? Workmanship or materials that are deemed faulty, providing the e3 twin has, at all times, been used in normal conditions, in accordance with the instructions and properly maintained.

What is not covered? Second hand product. Modified product. Poorly maintained product.

Normal wear, fading and fabric cuts. Improper use (by way of example): abnormal use; not following instructions; child left unattended; safety harness not used; excessive load; transport damage i.e. airline or any freight damage.

Customer costs within warranty. The customer is responsible for any inwards freight charge to return the product to the manufacturer or its representative for warranty and or service.

Customer costs outside of warranty. Where proof of purchase is not provided or the product is outside of the one year period. The manufacturer (or agent) reserves the right to charge a service fee and/or charge for parts replaced/repared. A return freight charge may apply.

Exclusions. Any consequential loss or damage to any person or property directly or indirectly as a result of using the product.

Who do I contact? Please discuss any warranty or service queries with your store of purchase. You will be required to show proof of purchase. They will inform you of the next step.

* The consumer may have additional rights in some countries or states.

Name

Address

Phone

Email

Just a few extra details to help us
adapt & survive!

Your age?

under 25 25-34 35-40 40+

Number of children

1 2 3 3+ soon!

Their ages?

How did you hear about us?

Which most excellent product did you buy?

- e3 twin escape e3
 smartbuggy metro T2
 accessories metoo bebe
 e3 double kit pepe tott

Date of purchase? / /

Rate from 1-10 how likely you would be to
recommend this product to someone else?

1 2 3 4 5 6 7 8 9 10

Why?

Any general suggestions?

Can we inform you of any new products
and specials? yes no

affix
stamp
here

phil&teds™

102-112 daniell street
newtown
wellington 6002
new zealand

warnings

Keep with your buggy for future reference. Ensure you read carefully all the safety information and warning notices.

Injury may result if you do not follow all safety precautions. Injury may result from improper use.

WARNING: Never leave children unattended, it may be dangerous. Take extra care with any child asleep in the buggy.

WARNING: Ensure that all locking devices are engaged before use.

WARNING: Any load attached to the handle affects the stability of the vehicle.

Do not hang luggage or carry extra children on the buggy. Do not allow a child to stand on the seat. Do not carry extra weight over that allowed by the instructions, this may make the buggy unstable. Do not place more than 3kg/7lbs in the parcel tray.

WARNING: Always use the safety harness to avoid serious injury from

falling or sliding out. Always secure all safety harness straps. Ensure the safety harness is correctly fitted, adjusted and securing child firmly. Make sure children are clear before folding, erecting or adjusting the buggy.

WARNING: Apply brakes when you park the buggy. Apply brakes when loading or unloading children.

WARNING: e3 twin can carry a maximum load of 40kg/88lbs at any time in any configuration.

WARNING: Do not modify the buggy or use accessories not designed for it. They may be unsafe.

WARNING: Care should be taken if buggy is used on stairs or escalators.

WARNING: The buggy should not be used near an exposed flame.

WARNING: The buggy is not suitable for running or skating.

If required, use the D-rings on the waist strap to attach a safety harness conforming to BS 6684.

adapt & survive!™

safe & sound

we've attained the following safety standard as product safety is paramount to us:

BS 7409:1996

head office +64 (4) 380 0833

fax +64 (4) 380 0137

address 102-112 daniell street
wellington new zealand

visit www.philandteds.com

Phil & Teds Most Excellent Buggy Co Ltd (phil & teds), phil and teds, the phil & teds logo, the shapes and designs of the products and the adapt & survive logo are global trademarks of Phil & Teds New Zealand Limited. Phil & Teds New Zealand Limited is the owner of all past, present and future intellectual property used and developed in relation to the business and reserves all rights in relation to its intellectual property and the presentation of it.

© phil & teds most excellent buggy company ltd